

# Regional Centres of Expertise

on education for sustainable development

## RCE TRANG

### The region

Trang, a hilly region situated on the southwestern coast of Thailand, originated as a seaport and centre of trade. With its 119 kilometres of shoreline and 46 islands, the region is known for its coral reefs, sandy beaches and waterfalls. Trang is well-forested and has two conserved areas. Rubber and palm oil cultivation are the major agricultural activities, and fishing brings in revenue for the coastal population.

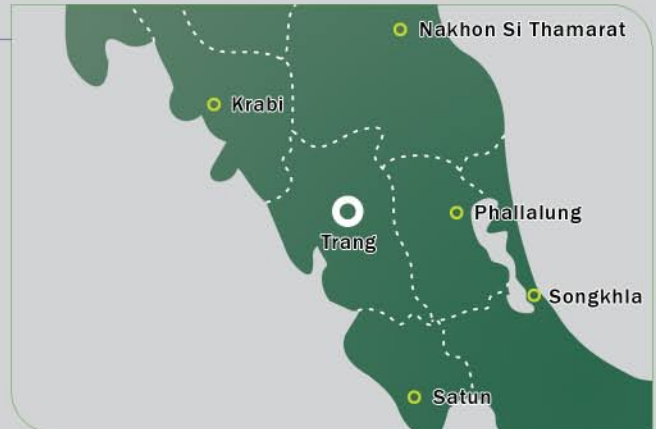
For the 603,434 people of Trang, Buddhism is the main religion and a few follow Islam and Christianity. The population density is 123 per sq.km., making Trang the 37th most densest province in the country.

### Regional challenges

The population increase from migration is a major challenge the region faces. This puts pressure on the environment and leads to the destruction of natural resources and the degradation of energy and environmental quality. The region has a very high density of factories – rubber, palm oil and fisheries. At the same time, the level of education is improving and is in line with the booming economy. Educated people in the region are helping solve and prevent the degradation of environmental quality, and to preserve natural resources. The region has launched many campaigns at the community level to conserve the environment for good living. The region is also conserving its indigenous traditions and cultures which are battling against modernization.

### Regional role

The Trang region including the Trang's Chamber of Commerce, the Education Department of Trang Municipality, the Civil Society and Trang's Local Administration sector have long been raising public awareness and understanding on sustainable development. The main role of RCE Trang is therefore to reinforce awareness and understanding in the subject as well as to increase support from all parties involved. RCE Trang will facilitate public collaboration among various sectors by organizing activities that provide discussion opportunities, access to Education for Sustainable Development (ESD) information and for exchange of expertise, thus promoting the concept of sustainability throughout the community.



### Organizations involved

The Trang region has joined hands with several strong partners to work for ESD.

- The Chamber of Commerce is very keen on green tourism and in supporting income-generating activities.
- The Department of Education of Trang municipality encourages all educational institutions to reform the curriculum to face the booming economy and to further develop the IT sector.
- The local administration sectors are responsible for public welfare.
- Civil society organizations facilitate training activities among parties involved in ESD. The Yadfon association has helped to improve activities employing local wisdom, such as in the case of the revival of sago farming.

These 4 core sectors are all actively involved in the RCE Trang.



Phraya Ratsadanupradit Mahison Phakdi, a former governor of Trang who brought in the first rubber trees in 1899. Rubber is now the staple crop of the region.

## Goals of the RCE

RCE Trang envisions a region with its people living sustainably under an administration with good governance, and one that utilizes local wisdom and philosophy.

The RCE aims to launch a public campaign to raise awareness of sustainable development while upholding the morals and traditions of the region.

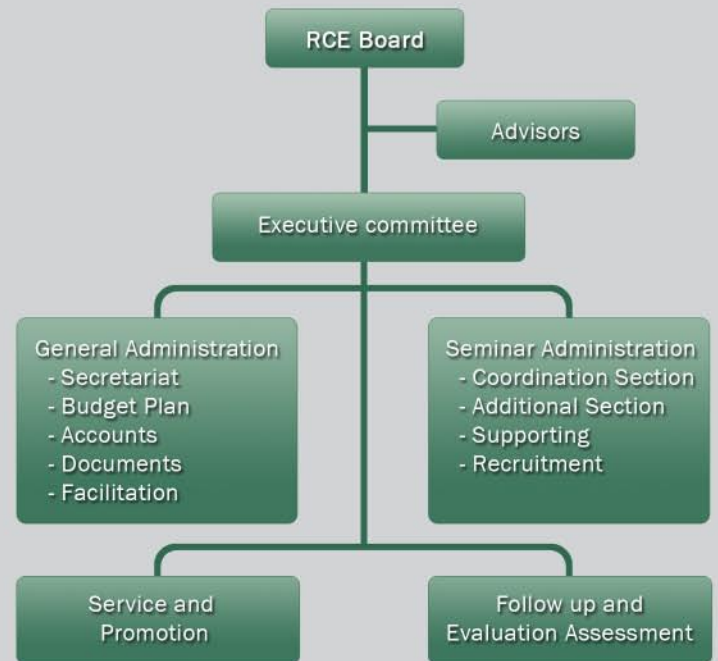
The objectives of RCE Trang are to:

- be a centre of expertise while adopting the philosophy of the sufficiency economy and upholding social values, traditions and customs,
- develop a centre where local people can share and seek knowledge on sustainable development,
- update members on new knowledge regarding sustainable development,
- enable cooperation and exchange of expertise and experiences of the RCE network among members,
- facilitate public access to information, activities and resources on environment,
- enable people to exhibit and demonstrate their achievements and new discoveries, and to
- be a centre that raises public awareness on the environment by organizing various activities.

## Activities

- Conduct research to better the quality of education at all levels.
- Reinforce the preservation of local traditions, art and culture.
- Support outstanding academics.
- Develop a good understanding of sustainable development in the region.
- Unite, support and strengthen the community through several RCE networks in the province.
- Encourage businesses to integrate sustainable development.
- Exchange ideas for actions to achieve sustainable development.
- Compile information on sustainable development, local knowledge and philosophies and develop a database accessible to the public.
- Raise awareness on sustainable development.

## Decision-making structure



The government of the Trang municipality has allocated funds to develop an eco-centre where the RCE will be based.

## For more information

Jaree Sin-a-nan  
Trang Municipality  
THAILAND  
Jaree\_sky@hotmail.com

Watcharee Amplord  
Trang Municipality  
THAILAND  
watchareea@gmail.com